

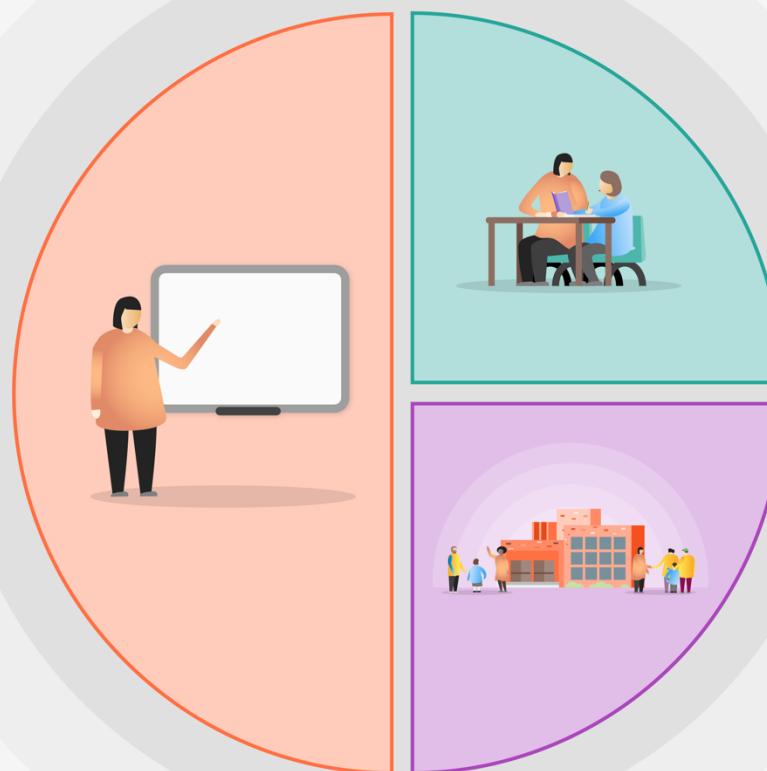
# 1 Teaching

## Engagement Classes (Class 9 / 10)

- Daily Tapestry and learning activities
- PLIMs linked to Home learning activities sent home (personalised learning)
- Regular contact via the tapestry platform and / or phone calls to support learning at home and check on progress and wellbeing of children and their families.
- Feedback and challenges in response to parental uploads of work via Tapestry.
- Transitional visuals to support children to understand the changes and transition to home-learning and then back to school following closure.
- A flexible approach to home learning with families choosing from: daily online learning tasks, printed activities (sent home in packs), personalised learning activities and downloadable activities.

## Core and Extended Classes (Class 11 / 12)

- Home learning plans sent home containing a range of paper based and downloadable resource. Planning for parents to follow and use of Oak Academy, White Rose Maths and BBC Bitesize to support learning.
- PLIMS / SCERTS targets to be sent home with a visual 'pinboard' of ideas to support the children to continue to work on these targets.
- Formative assessment of learners returning from absences to inform personalised learning and planning for learning needs
- Feedback and challenges will be set via telephone contact and tapestry with parents



# 2 Targeted academic support

- Collaboration with professionals to support the home learning packs sent home
- Remote sessions offered where children are identified as needing particular support / or parental guidance
- Additional home school contact with pupil premium or LAC learners.
- Behaviour support strategies and additional visual to support learners and parents who are struggling with the change to home learning.

# 3 Wider strategies

- Weekly SLT meeting to discuss learning, progress and concerns and problems solving.
- Effective communication at a wider level co-ordinated via WhatsApp Covid response Group of senior leaders and Facebook posts to parents.
- Admin support with learning pack delivery and parental contact
- - Communication with Site manager regarding health and safety and Covid response
- Flow chart of isolation times and rules updated by and supported by site manager