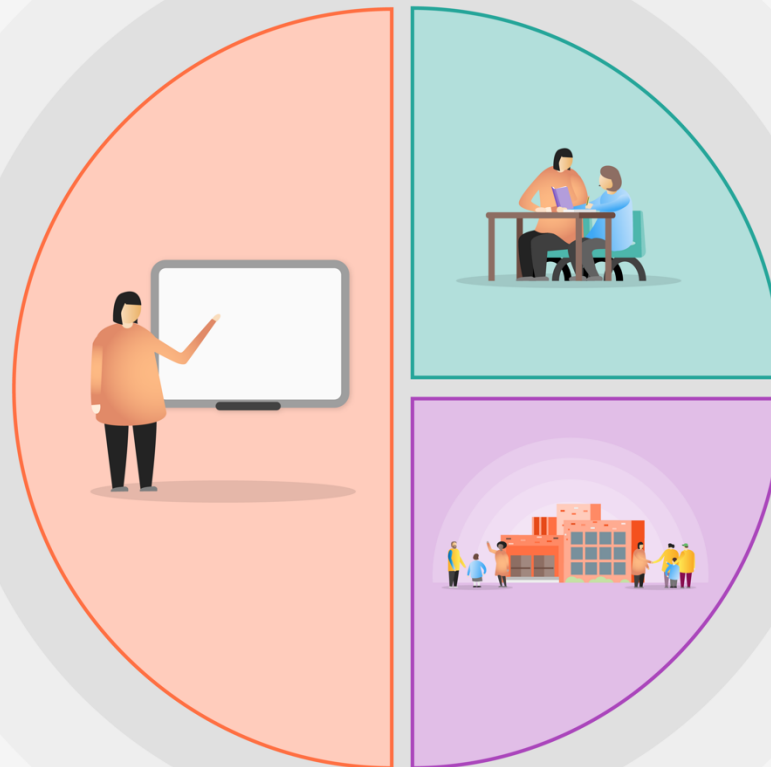


### 1 Teaching

- Continued focus on EHCP's and PHSEE.
- Zones of regulation used to help pupils understand their feelings regarding partial closure.
- Initial 2 week individualised work packs sent home as part of broad and engaging curriculum.
- Tapestry used for home learning for most vulnerable pupils.
- Weekly virtual meeting with phase / pathway lead.
- Progress and attainment of pupils continued to be monitored.
- Phonics / Launchpad for Literacy activity and appropriate reading material sent home.
- Use of white rose maths to support sequential learning.
- Strong communication between staff using Microsoft Teams and email



### 2 Targeted academic support

- Collaborative approach to working with external agencies to monitor vulnerable pupils.
- Intervention packs sent home to support progress towards short term EHCP targets.
- Parents provided with short term targets to work towards EHCP long term targets.
- Strong links with school safeguarding lead to target vulnerable pupils.

### 3 Wider strategies

- CPOM's used to monitor incidents and contact with external agencies.
- Weekly pastoral home contact to identify any barriers to home learning.
- Weekly online SLT to feedback phase information.
- Reintegration attendance monitored to get vulnerable pupils into school as soon as possible.