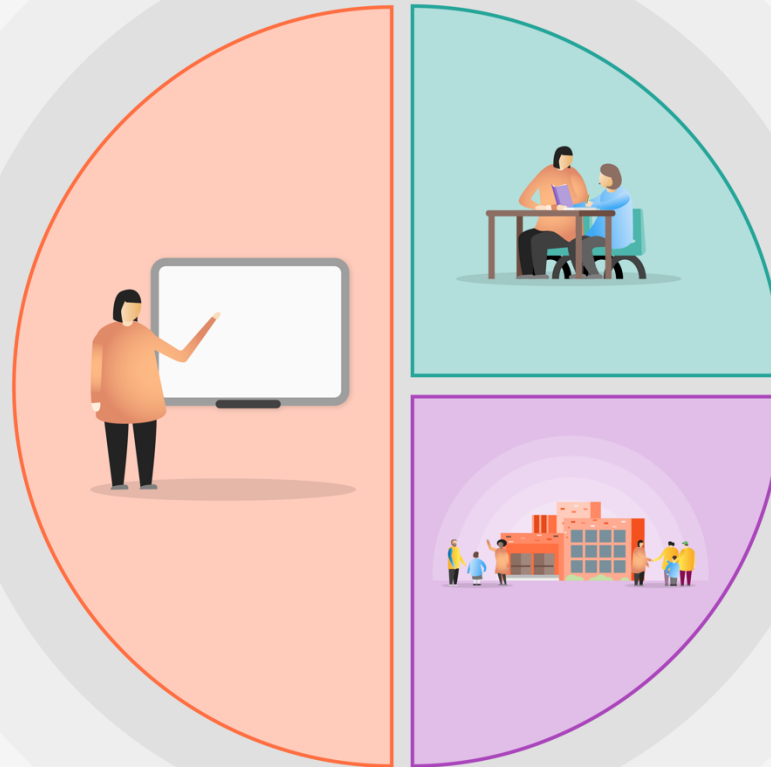


### 1 Teaching

- A long term curriculum that places PHSEE at the centre of learning whereby children can develop the behaviour learning that they need in order to succeed in all areas.
- Differentiated curriculum. Class 13 access subject specific learning. Class 11 and 12 are taught subjects at relevant key stage embedded within a theme by the same teacher to allow children to make explicit connections and links
- Children have PLIMS and these targets are planned for within lessons and oppourtunities created through the curriculum for children to work on these.
- Some children have SCERTS and these are worked on through the day with personalised learning planned for.



### 2 Targeted academic support

- Planned interventions for children identified through triangulation of data linked to a child's PLIMs.
- Speech and Language interventions in phase as directed by SALT services.
- 

### 3 Wider strategies